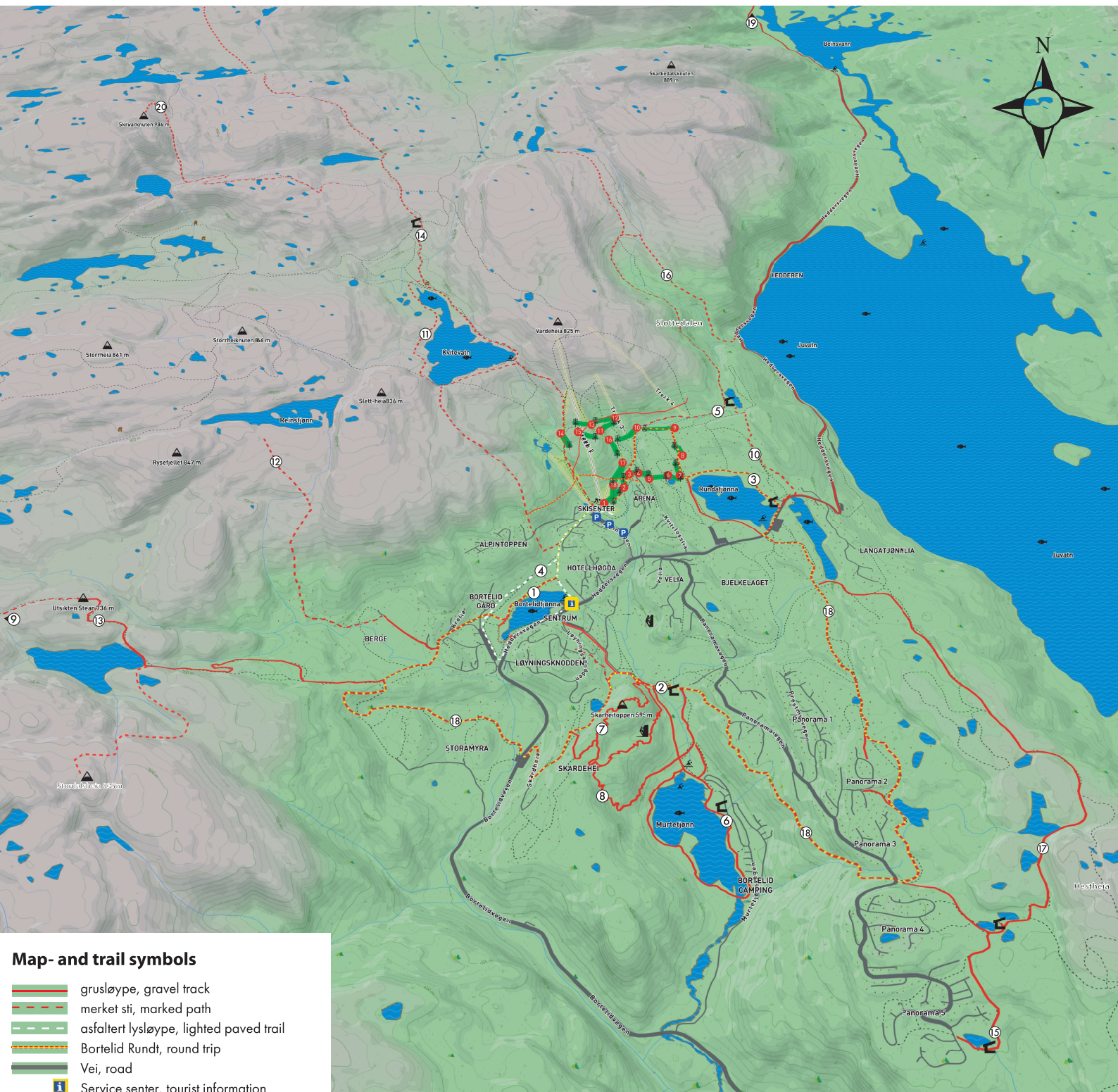




Hike- and Bikemap



Map- and trail symbols

- grusløype, gravel track
- merket sti, marked path
- asfaltert lysløype, lighted paved trail
- Bortelid Rundt, round trip
- Vei, road
- Service senter, tourist information
- gapahuk, shelter
- klatring, buldring, climbing, free climbing
- Fiskemuligheter, fishing
- Bademuligheter, swimming
- Frisbeegolf
- Utsiktspunkt, view point
- Lysløype, lighted trail
- Dnt turishytte, dnt self service cabin
- Rundløype, distance round trail
- frem og tilbake, distance back and forth
- Enkel løype, easy short trip
- Middels løype, medium trip
- Krevende løype, challenging longer trip
- Svært krevende, long trip for experienced users

Trails in Bortelid sorted by lengt / difficulty

See detailed description on the back or visit www.bortelid.no/trails

① Bortelidtjønna		↻ 1,1km	▲ 5m	⑫ Reinstjønn		↻ 5km	▲ 240m
② Murtebekken		↻ 1,7km	▲ 30m	⑬ Utsikten Stean		↻ 6km	▲ 180m
③ Rundtjønna		↻ 5km	▲ 60m	⑭ Kvitsyn		↻ 6,6km	▲ 225m
④ Lysløype		↻ 2,5km	▲ 30m	⑮ Brendeknoddstjønna		↻ 6,7km	▲ 118m
⑤ Lille Reinstjønn		↻ 3,7km	▲ 70m	⑯ Hedderskleiva		↻ 9km	▲ 190m
⑥ Murtejønn		↻ 4km	▲ 80m	⑰ Hesthei		↻ 11km	▲ 125m
⑦ Skardheitoppen		↻ 2,9km	▲ 70m	⑱ Bortelid rundt		↻ 11km	▲ 130m
⑧ Krossmorlia		↻ 3,3km	▲ 80m	⑲ Ånebjør		↻ 25km	▲ 100m
⑨ Bjønnehola		↻ 8km	▲ 200m	⑳ Skrivarknuten		↻ 12km	▲ 415m
⑩ Fjellkinn		↻ 5,4km	▲ 95m	㉑ Gaukhei		↻ 34km	▲ 415m
⑪ Kvitevann		↻ 5,5km	▲ 200m				

